

Art. 8SL301100100025



Etching agent – sodium persulphate

For cliché etching

Packed in 5 ou 25 kg

Art. 8DV657500200020



Developer for photosensitive coating DET539.54

20l plastic drum

Art. 8SP657100200020



Stripper for photosensitive coating DET539.54

20l plastic drum

Art. 8LQ113100100005

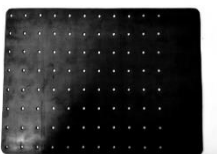


Retouch red varnish

To retouch clichés before etching.

0.5 L. plastic bottle

Art. 9MA2200001



Magnetized etching matt for horizontal etching machine.

To etch small clichés.

Ref. 9CO20170001



Biosane

Cleaning and degreasing compound
fast evaporation, non poisonous, non flammable.

1 L. or 25 L. steel can

Ref. 9CO20170005



Cotton wool

Available in rolls

1 box with 5 rolls

Ref. 9CO30100002



Abrasive belt for sanding machine

Art. 9CO40120002



Anti-rust wrapping paper

To prevent corrosion on clichés

Available in sheets 430x330 mm or in rolls

Ref. 9CO30100005



White UV protection foil

Rolls

Different sizes available

Ref. 9CO30170007

Cleaning towels



Fibre towels,
absorbent, flexible, strong, solvent resistant, no plush.

Ref. 9CO30170008



Alcohol

Cleaning and degreasing compound to remove glue marks.

1 L. bottle

Ref. 9CO60100001



Disposable gloves

To keep hands clean

size S/M/L

1 box with 100 pairs

Ref. 9CO60100002



PVC gloves

150mm thick gloves, highly resistant to oil, acids, lees, and most solvents.
EC cat. 3

size S/M/L

sold by pair

Ref. 9CO60100003



White microfibre gloves

machine washable

size S/M/L

sold by pair

Ref. 9MA1100992



Exposure unit

Available in different sizes

Ref. 9MA120300



Etching machine

for thin and thick steel plates.
Available in different sizes

Ref. 9MA120350



Etching machine

for occasional etching